



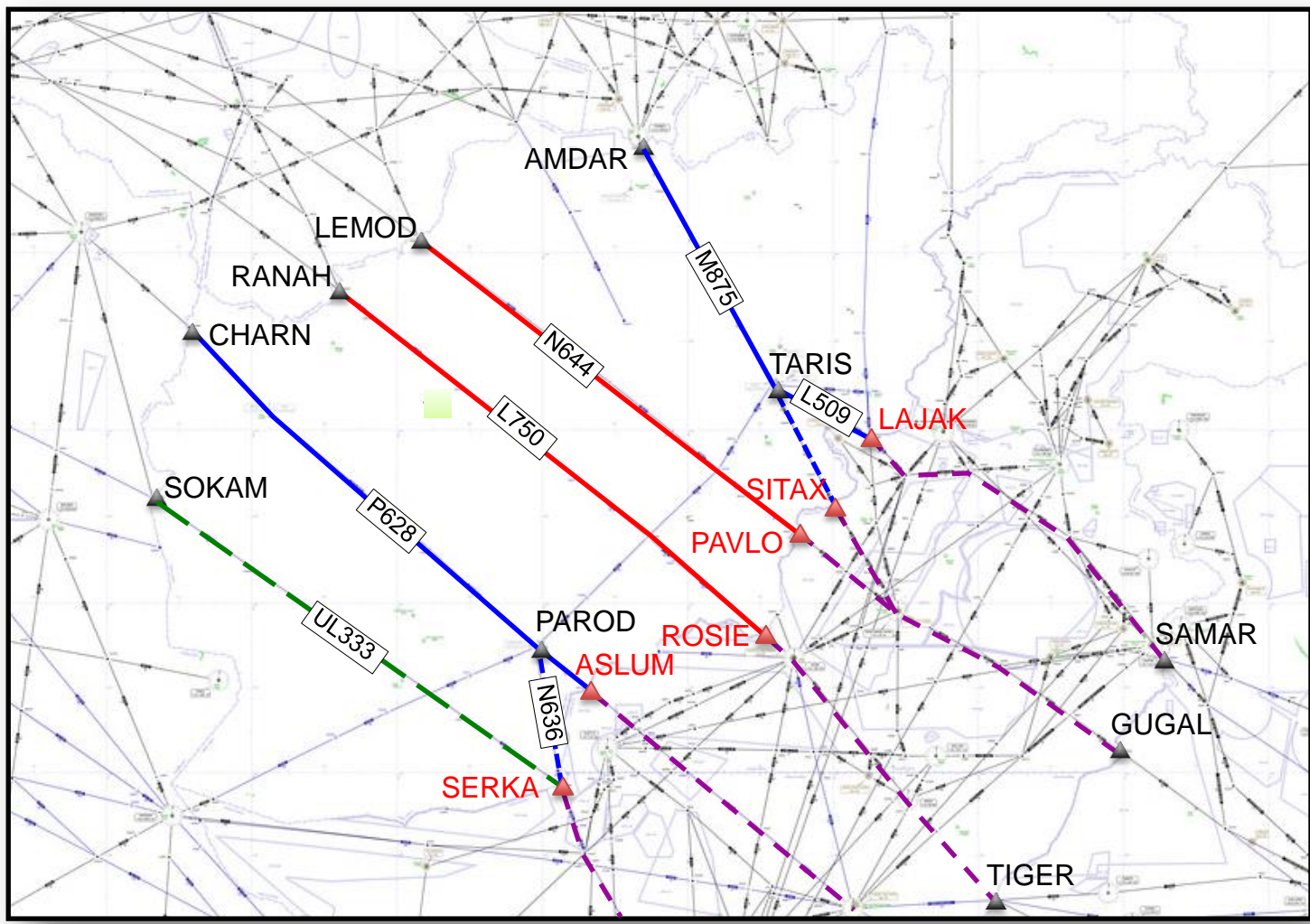
Kabul FIR Traffic Sample Data December 2013

Ad Hoc Afghanistan Contingency Group (AHACG/1)



**11 – 12 September 2014
Kuala Lumpur, Malaysia**

Afghanistan Airspace : BOBCAT System



- | | | | | | |
|--|-----------------------|--|----------------------------------|--|--|
| | 50NM RNP10 | | FL320 – FL400 | | FL280 only |
| | Procedural Separation | | FL280 – FL400
(exclude FL300) | | FL320 – FL400
(no ATFM slot required) |
| | Outside Afghanistan | | | | |

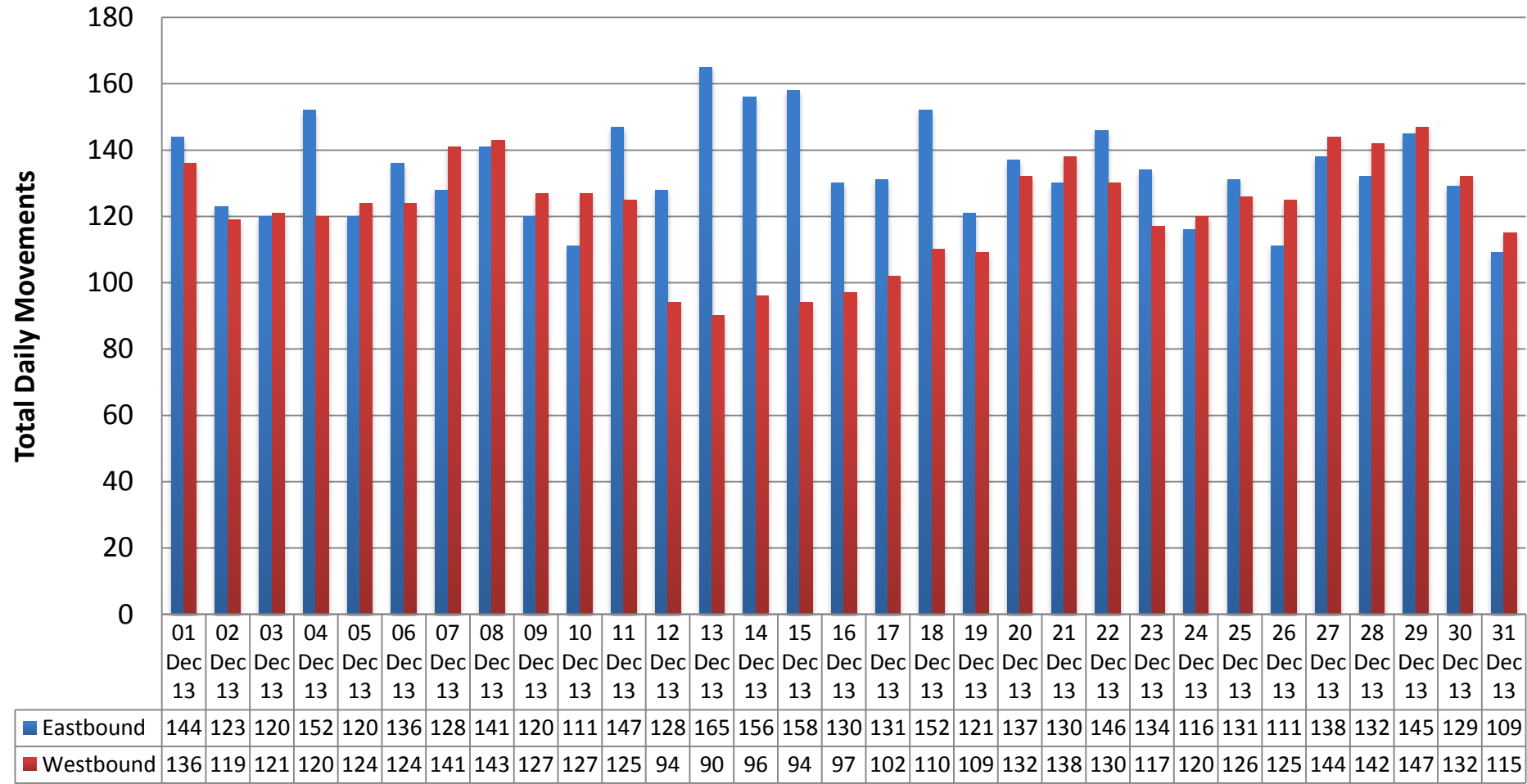


- Kabul FIR Traffic Sample Data – December 2013
 - Coverage : RVSM Airspace (FL290 – FL410)
 - Annual full-month Traffic Sample Data submitted to the Monitoring Agency for the Asia Region (MAAR)
 - Includes flight record and altitude changes in RVSM airspace
 - Normally used for RVSM Airspace Safety Assessment
 - Approval from Afghanistan required for other usage
 - Traffic Direction can be determined by “Entry Fix”
 - e.g. ASLUM entry fix categorized as “Westbound” while RANAHA entry categorized as “Eastbound”

Eastbound vs Westbound Daily Flights



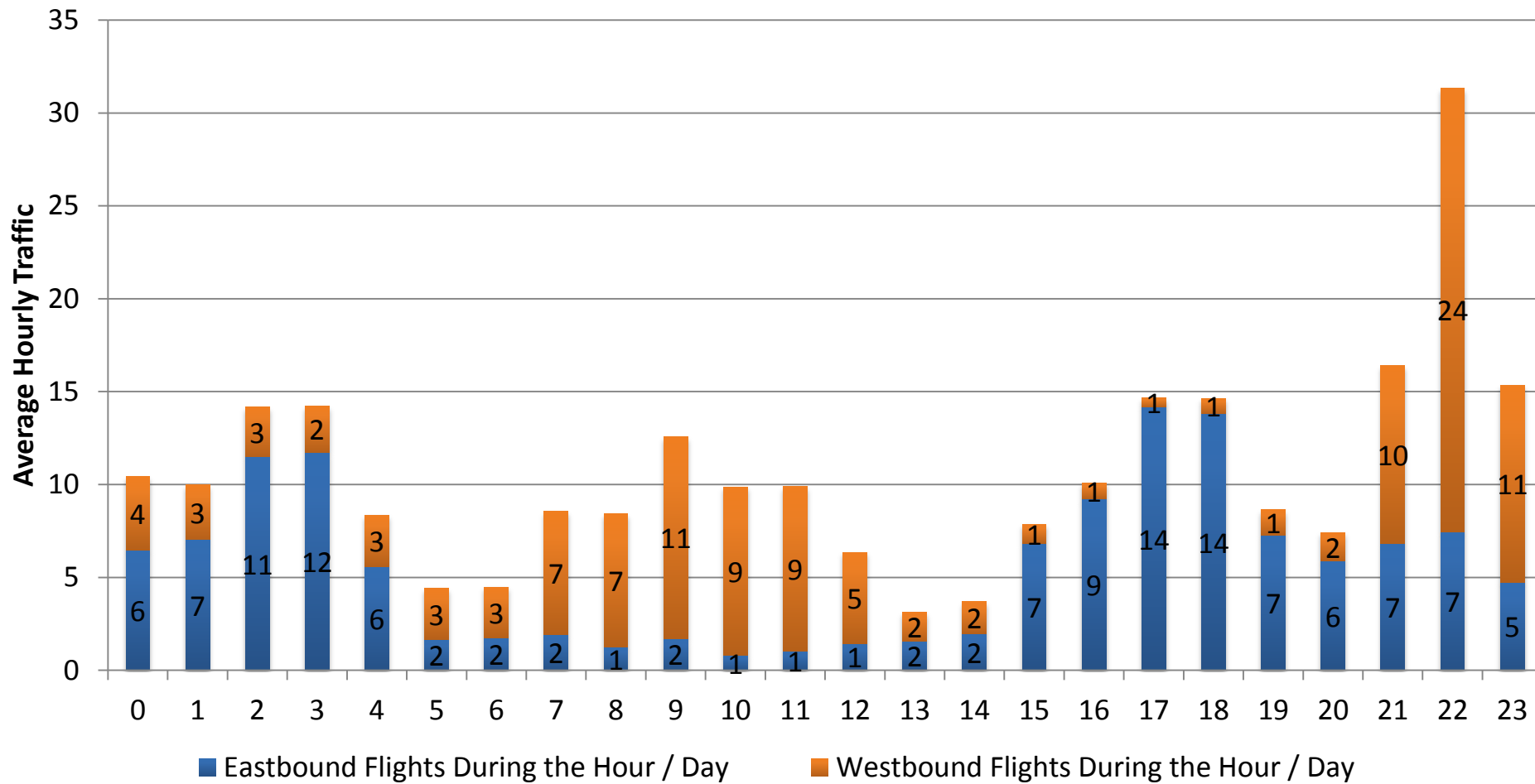
Daily Flights through Afghanistan Upper Airspace (FL290 – FL410) 1 – 31 December 2013



Hourly Traffic Distribution



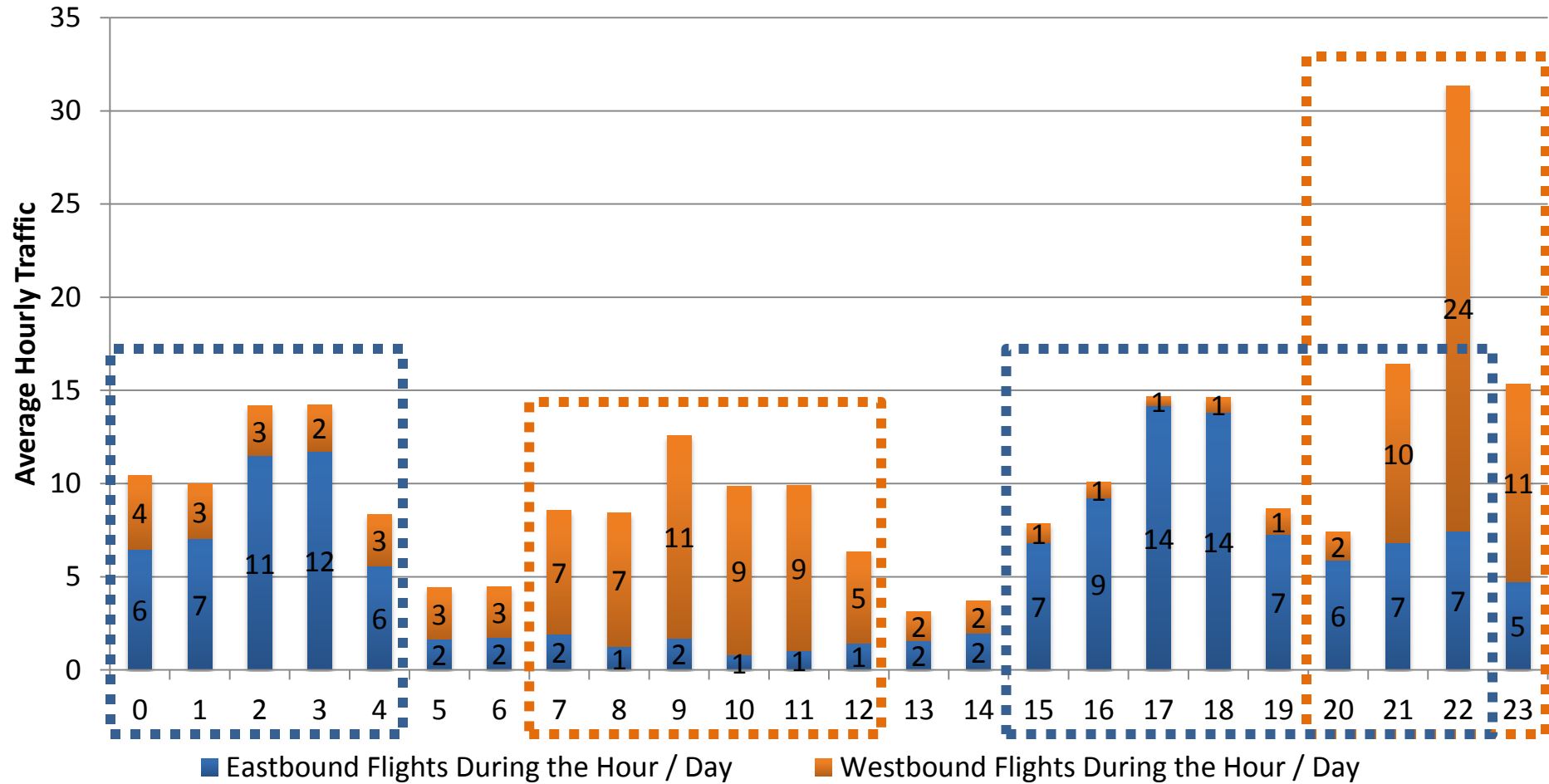
Average Hourly Traffic in Afghanistan Upper Airspace (FL290 – FL410) 1 – 31 December 2013



Hourly Traffic Distribution



**Average Hourly Traffic in Afghanistan Upper Airspace (FL290 – FL410)
1 – 31 December 2013**



Next Steps



- Further detailed analysis on city pair / region pairs involved
- Analysis on ATFM operations
 - Westbound
 - 2000 – 2359UTC : BOBCAT Operations
 - Other hours required?
 - Eastbound